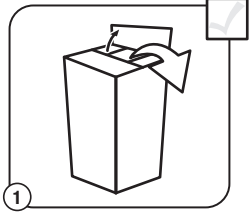
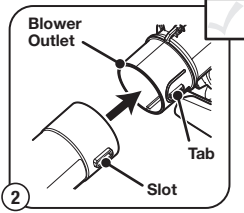


Unpacking the Unit

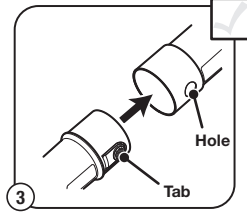


1 Remove all contents from the carton.

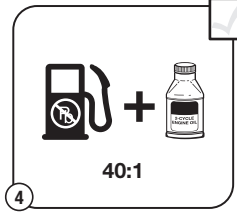
Assembling the Unit



2 Set the unit on a flat, level surface. Align the slot on the upper blower tube with the tab on the blower outlet. Push the upper blower tube onto the blower outlet until the tab locks securely into the slot.
NOTE: Always install the upper blower tube.

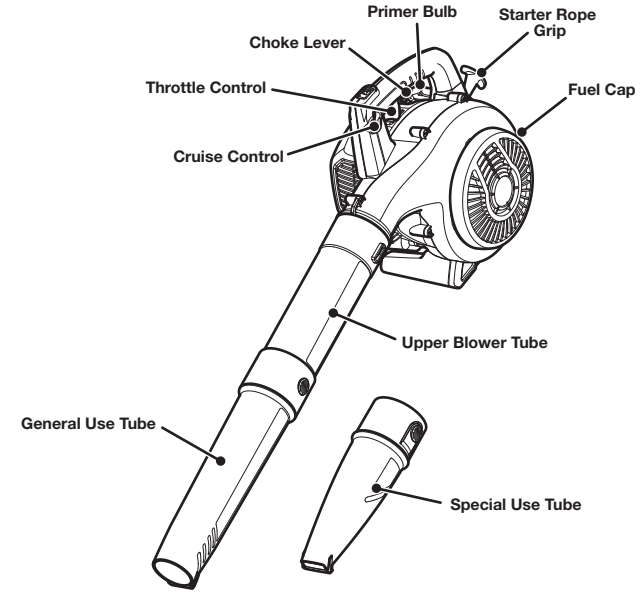


3 Align the tab on the general use tube or special use tube with the hole on the upper blower tube. Push the general use tube or special use tube into the upper blower tube until the tab locks securely into the hole.
NOTE: Only use the special use tube to concentrate and intensify the air flow when needed. **DO NOT** use the special use tube for general work or for long periods.



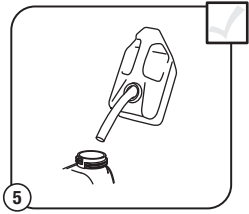
4 Mix thoroughly in a separate fuel can:
- 3.2 fl. oz. of 2-cycle engine oil
- 1 gallon of fresh unleaded gasoline (**less than 30 days old**)
NOTE: Do not mix directly in the unit fuel tank.

NO ASSEMBLY TOOLS REQUIRED

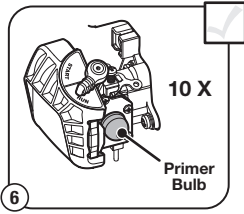


Need Help?
Call 1-800-828-5500

Assembling the Unit

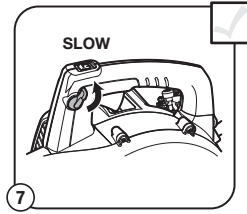


5 Place the unit on a level surface. Remove the fuel cap. Fill the fuel tank. Replace the fuel cap. Move the unit at least 30 ft. (9.1 m) from the fuel container and the fueling site before starting the engine.

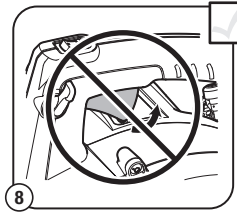


6 Press the primer bulb **10 times**, or until fuel is visible.

Starting the Unit

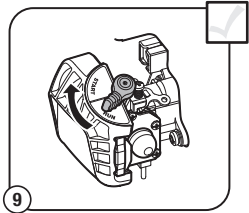


7 Move the cruise control to the **SLOW** position.

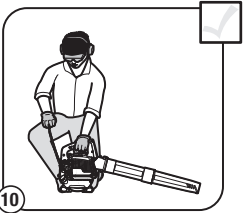


8 **DO NOT** squeeze the throttle control.

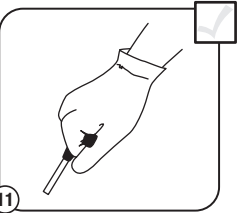
Starting the Unit



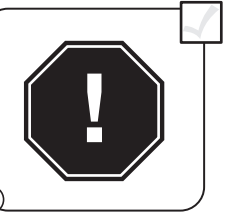
9 **DO NOT** squeeze the throttle control. Flip the choke lever clockwise until it clicks into the **START** position.



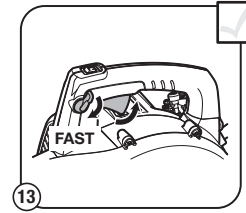
10 **DO NOT** squeeze the throttle control. Crouch in the starting position.



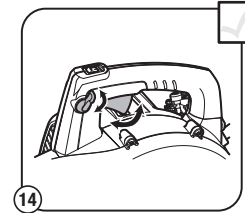
11 **DO NOT** squeeze the throttle control. Pull the starter rope with a controlled and steady motion until the unit starts.



12 Idle the engine for 5 to 10 seconds. If the unit stops during this time, squeeze and hold the throttle control or move the cruise control to the **FAST** position, then pull the starter rope in a controlled and steady motion until the unit starts.



13 **Squeeze and hold the throttle control or move the cruise control to the FAST position.** Allow the engine to warm up for 30 to 60 seconds.



14 Once the engine is properly warmed, the cruise control may be adjusted and the throttle control can be used normally.

DIDN'T START?
Repeat the starting instructions.
If the unit still fails to start, refer to the operator's manual for additional starting and troubleshooting information.

