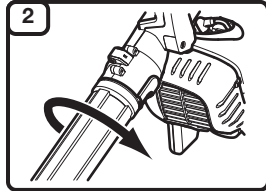
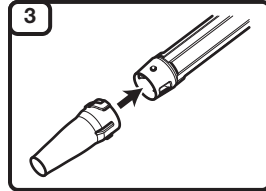


ASSEMBLY

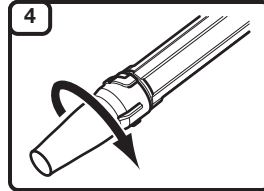
Align the bumps on the upper end of the blower tube with the slots on the blower outlet. Insert the blower tube into the blower outlet.



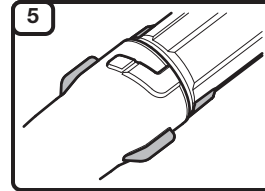
While holding the handle, twist the blower tube clockwise until it locks into place.



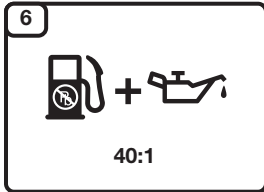
Align the slots on the nozzle with the bumps on the lower end of the blower tube. Install the nozzle onto the blower tube.



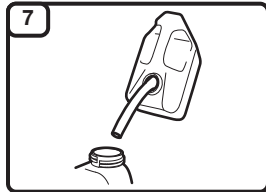
While holding the blower tube, twist the nozzle clockwise until it locks into place.



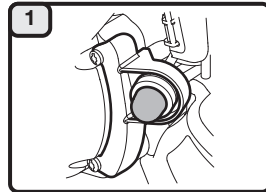
The tabs on the blower tube should align with the tabs on the nozzle.



Mix thoroughly in a separate fuel can:
 – 3.2 fl. oz. of 2-cycle engine oil
 – 1 gallon of fresh unleaded gasoline (**less than 30 days old**)
NOTE: Do not mix directly in the unit fuel tank.

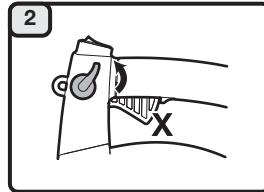


Position the unit with the fuel cap facing up. Slowly remove the fuel cap. Fill the fuel tank. Reinstall the fuel cap. Move the unit at least 30 ft. (9.1 m) from the fuel container and the fueling site before starting the engine.

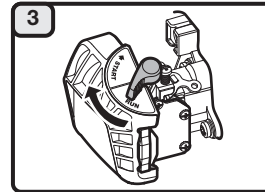


STARTING

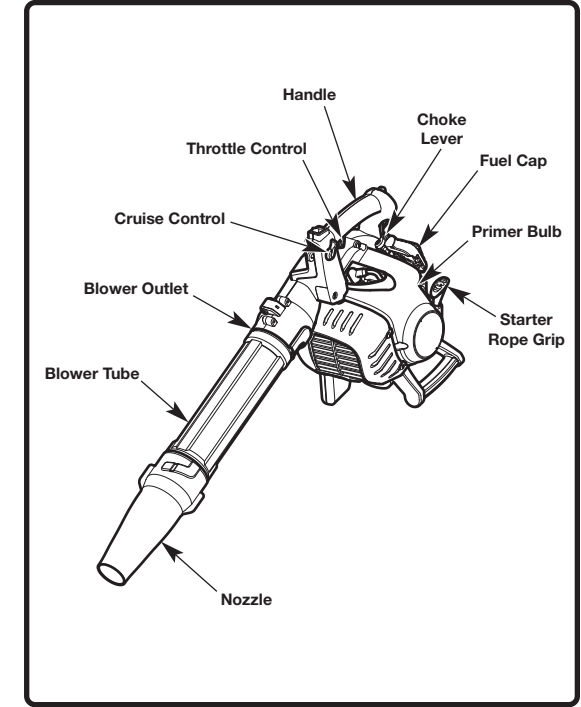
Press the primer bulb **10 times**.



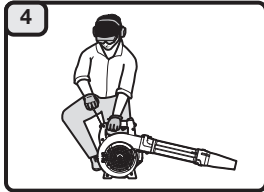
Move the cruise control to the **LO (slow)** position.
NOTE: Keep the cruise control in the LO (slow) position and DO NOT squeeze the throttle control until step 7.



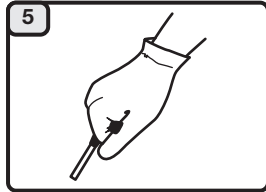
Flip the choke lever clockwise until it clicks into the **START** position.



NO ASSEMBLY TOOLS REQUIRED



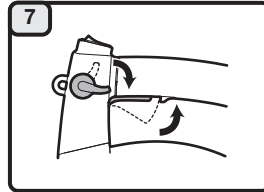
Crouch in the starting position.



Pull the starter rope with a controlled and steady motion until the unit starts.



Idle the engine for 30 seconds.



Squeeze and hold the throttle control or move the cruise control to the **HI (fast)** position.

DIDN'T START?

Repeat the starting instructions.

If the unit still fails to start, refer to the operator's manual for additional starting and troubleshooting information.

NOTE: This unit includes a cruise control, which allows the operator to maintain the desired engine speed without having to squeeze the throttle control.