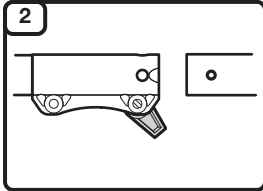
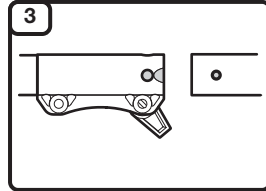




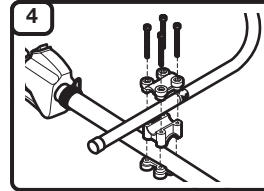
**1**  
Read the operator's manual thoroughly before operating the unit. Follow all warnings and safety instructions. This fast guide is intended as a reference for users that have already read the operator's manual and are familiar with the necessary safety precautions.



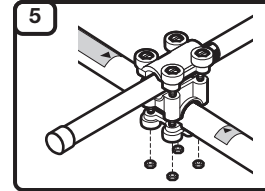
**2**  
**ASSEMBLY**  
Remove the hanger cap from the attachment. If present, remove the gray spacer from the coupler. Turn the knob counterclockwise to loosen the coupler.



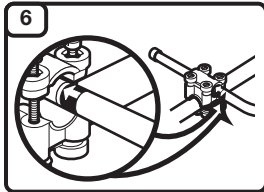
**3**  
Align the release button with the guide recess. Push the attachment straight into the coupler until the release button snaps firmly into the primary hole. Turn the knob clockwise to tighten the coupler.



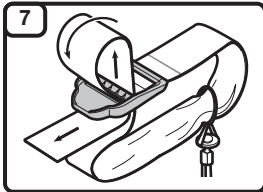
**4**  
Place the handle between the top clamp and middle clamp. Place the clamps and handle over the upper shaft housing and onto the coupler. Make sure the curved portion of the handle is on the operator's left. While holding the pieces together, insert the bolts (x4) into the aligned holes.



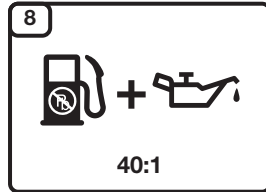
**5**  
Make sure the handle is positioned between the two arrows. Screw a nut onto the end of a bolt, but only slightly. Push the nut into the hexagonal recess on the bottom clamp. Hold the nut in place. Tighten the bolt with a Phillips screwdriver, but do not tighten it completely. Repeat this step for each nut and bolt.



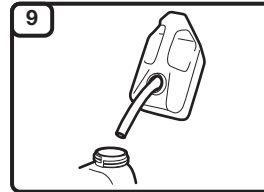
**6**  
Hold the unit in the operating position and slide the handle in or out of the clamp until the arrow/line on the decal touches the clamp. Angle the handle forward or backward, as desired. Tighten the bolts with a Phillips screwdriver until the handle is secure.



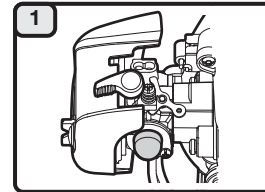
**7**  
Push the strap up through the center slot in the buckle. Bend the strap over and push it down through the lower slot in the buckle. Put the shoulder strap over the operator's head and onto the left shoulder.



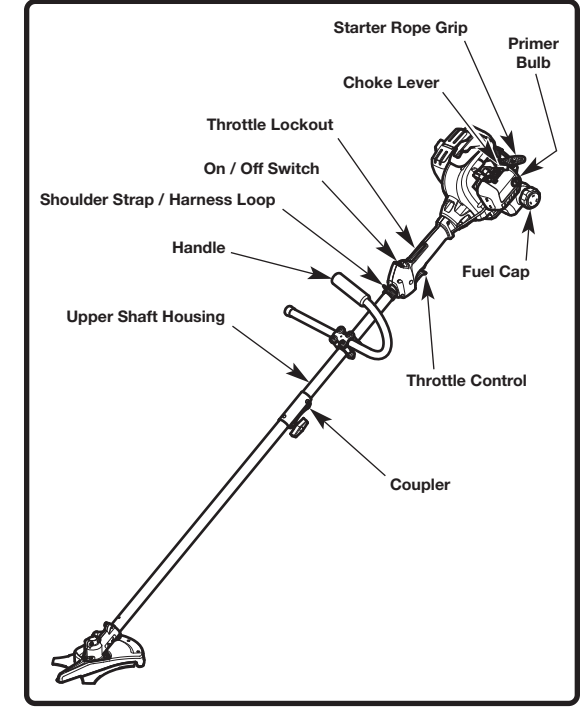
**8**  
Mix thoroughly in a separate fuel can:  
- 3.2 fl. oz. of 2-cycle engine oil  
- 1 gallon of fresh unleaded gasoline (**less than 30 days old**)  
**NOTE:** Do not mix directly in the unit fuel tank.



**9**  
Position the unit with the fuel cap facing up. Slowly remove the fuel cap. Fill the fuel tank. Reinstall the fuel cap. Move the unit at least 30 ft. (9.1 m) from the fuel container and the fueling site before starting the engine.



**10**  
**STARTING**  
Slowly press and release the primer bulb **10 times**.

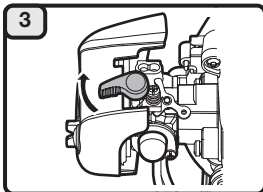


**ASSEMBLY TOOLS REQUIRED**

- Phillips Screwdriver



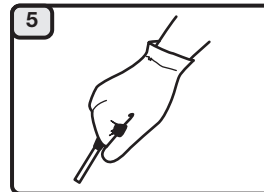
**11**  
**DO NOT** squeeze the throttle control until step 6.



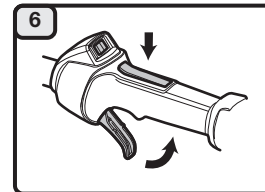
**12**  
Flip the choke lever clockwise until it clicks.



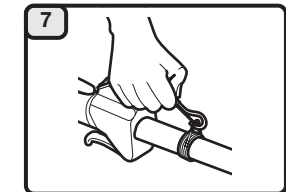
**13**  
Crouch in the starting position.



**14**  
Pull the starter rope with a controlled and steady motion until the unit starts.  
  
Idle the engine for 30 seconds.



**15**  
Press and hold the throttle lockout. Squeeze the throttle control as needed for operation.



**16**  
Snap the clip onto the shoulder strap / harness loop. Adjust the shoulder strap to fit the operator. Pull the buckle up to loosen the shoulder strap. Pull the strap down to tighten the shoulder strap.

**DIDN'T START?**  
If the engine does not start after pulling the starter rope 10 times, repeat the starting procedure.  
If the unit still fails to start, refer to the operator's manual for additional starting and troubleshooting information.



**IMPORTANT: READ THE OPERATOR'S MANUAL THOROUGHLY AND FOLLOW THE SAFE OPERATION PRACTICES WHILE OPERATING THE UNIT.**

Lea la traducción en Español en el manual.