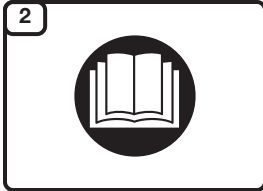
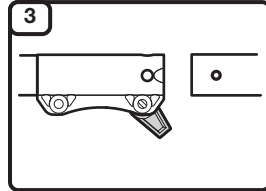




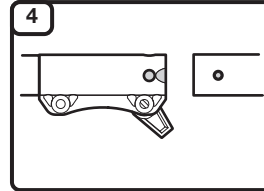
1
Read the operator's manual thoroughly before operating the unit. Follow all warnings and safety instructions. This fast guide is intended as a reference for users that have already read the operator's manual and are familiar with the necessary safety precautions.



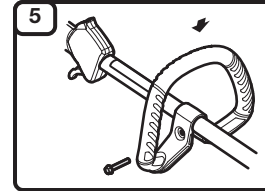
2
ASSEMBLY
Before and during operation: Check and adjust the chain tension. Make sure the chain oil reservoir is full. Refer to the operator's manual for complete instructions.



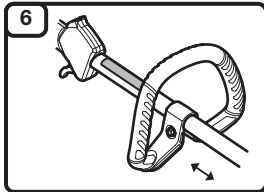
3
Remove the hanger cap from the attachment. If present, remove the gray spacer from the coupler. Turn the knob counterclockwise to loosen the coupler.



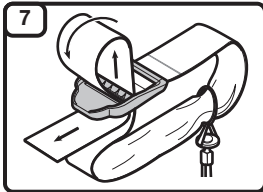
4
Align the release button with the guide recess. Push the attachment straight into the coupler until the release button snaps firmly into the primary hole. Turn the knob clockwise to tighten the coupler.



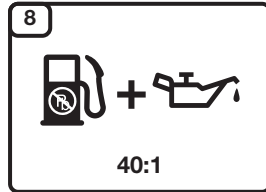
5
Push the handle down onto the upper shaft housing. Make sure the bolt hole faces to the right. Insert the bolt into the bolt hole. Tighten the bolt with a flat-head screwdriver, but do not tighten the bolt completely.



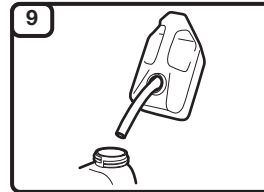
6
Move the handle to a comfortable location. Make sure the handle is positioned beyond the end of the safety label. Tighten the bolt until the handle is secure.



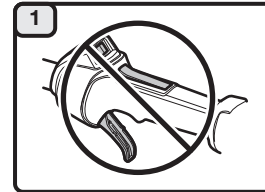
7
Push the strap up through the center slot in the buckle. Bend the strap over and push it down through the lower slot in the buckle. Put the shoulder strap over the operator's head and onto the left shoulder.



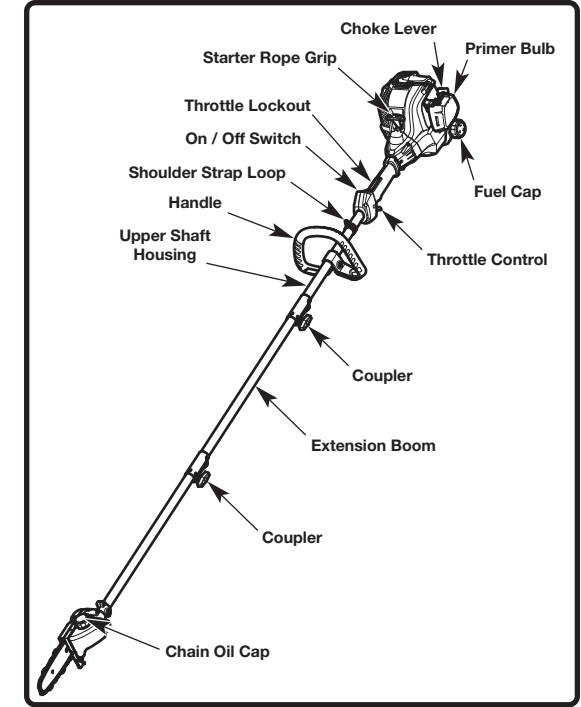
8
Mix thoroughly in a separate fuel can:
– 3.2 fl. oz. of 2-cycle engine oil
– 1 gallon of fresh unleaded gasoline (**less than 30 days old**)
NOTE: Do not mix directly in the unit fuel tank.



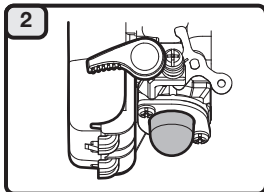
9
Position the unit with the fuel cap facing up. Slowly remove the fuel cap. Fill the fuel tank. Reinstall the fuel cap. Move the unit at least 30 ft. (9.1 m) from the fuel container and the fueling site before starting the engine.



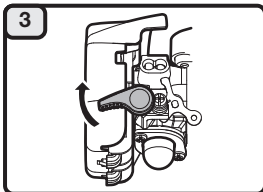
10
STARTING
DO NOT squeeze the throttle control until step 6.



ASSEMBLY TOOLS REQUIRED
• Flat-head screwdriver



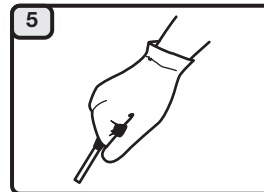
11
Slowly press and release the primer bulb **10 times**.



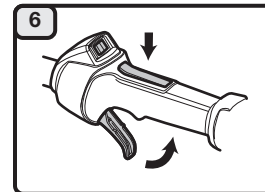
12
Flip the choke lever clockwise until it clicks.



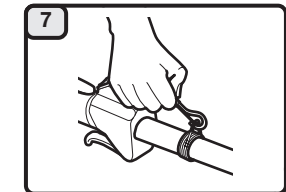
13
Crouch in the starting position.



14
Pull the starter rope with a controlled and steady motion until the unit starts. Idle the engine for 30 seconds.



15
Press and hold the throttle lockout. Squeeze the throttle control as needed for operation.



16
Snap the clip onto the shoulder strap loop. Adjust the shoulder strap to fit the operator. Pull the buckle up to loosen the shoulder strap. Pull the strap down to tighten the shoulder strap.

DIDN'T START?
If the engine does not start after pulling the starter rope 10 times, repeat the starting procedure. If the unit still fails to start, refer to the operator's manual for additional starting and troubleshooting information.