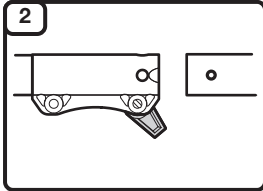


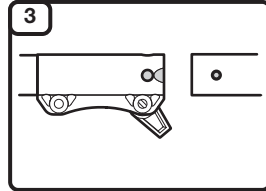


1
Read the operator's manual thoroughly before operating the unit. Follow all warnings and safety instructions. This fast guide is intended as a reference for users that have already read the operator's manual and are familiar with the necessary safety precautions.

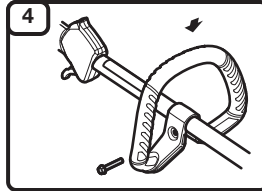


ASSEMBLY

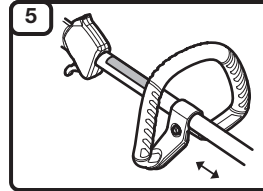
2
Remove the hanger cap from the attachment. If present, remove the gray spacer from the coupler. Turn the knob counterclockwise to loosen the coupler.



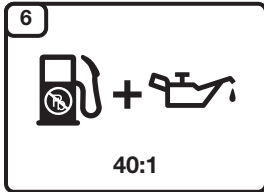
3
Align the release button with the guide recess. Push the attachment straight into the coupler until the release button snaps firmly into the primary hole. Turn the knob clockwise to tighten the coupler.



4
Push the handle down onto the upper shaft housing. Make sure the bolt hole faces to the right. Insert the bolt into the bolt hole. Tighten the bolt with a flat-head screwdriver, but do not tighten the bolt completely.

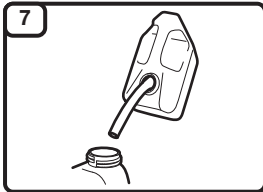


5
Move the handle to a comfortable location. Make sure the handle is positioned beyond the end of the safety label. Tighten the bolt until the handle is secure.

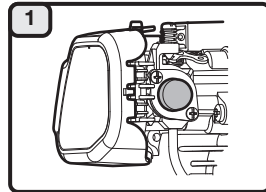


Mix thoroughly in a separate fuel can:

- 3.2 fl. oz. of 2-cycle engine oil
 - 1 gallon of fresh unleaded gasoline (**less than 30 days old**)
- NOTE:** Do not mix directly in the unit fuel tank.

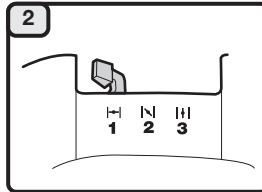


7
Position the unit with the fuel cap facing up. Slowly remove the fuel cap. Fill the fuel tank. Reinstall the fuel cap. Move the unit at least 30 ft. (9.1 m) from the fuel container and the fueling site before starting the engine.



STARTING

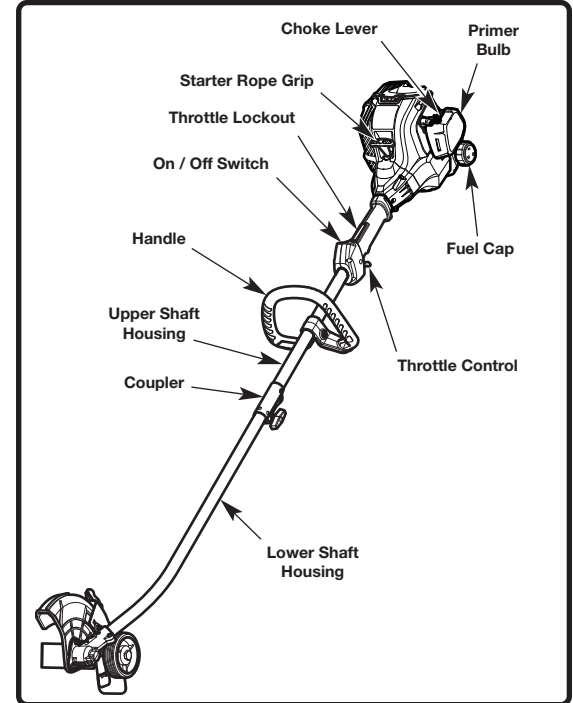
PRIME:
Slowly press and release the primer bulb **10 times**, or until fuel is visible.



PRIME:
Move the choke lever to **Position 1**.

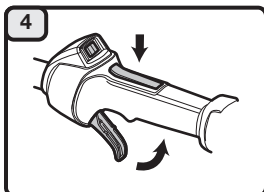


PRIME:
Crouch in the starting position.

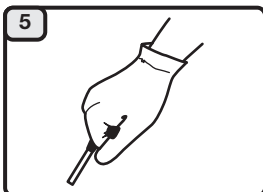


ASSEMBLY TOOLS REQUIRED

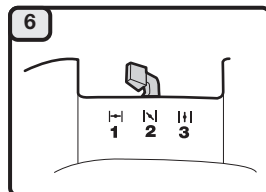
- Flat-head screwdriver



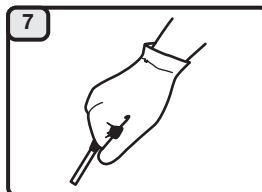
PRIME:
Press and hold the throttle lockout. Squeeze and hold the throttle control.
NOTE: Continue to **SQUEEZE** and **HOLD** the throttle lockout and the throttle control for **ALL** further steps.



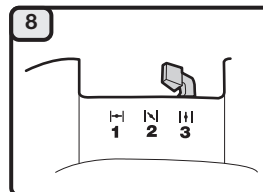
PRIME:
Pull the starter rope with a controlled and steady motion **5 times**.
DO NOT pull the starter rope more than 5 times.



START:
Move the choke lever to **Position 2**.



START:
Pull the starter rope with a controlled and steady motion **5 to 10 times** to start the engine. Allow the engine to warm up for 60 seconds.



START:
Move the choke lever to **Position 3**. Allow the engine to warm up for an additional 60 seconds. The unit may be used during this time.

DIDN'T START?

Repeat the starting instructions.
If the unit still fails to start, refer to the operator's manual for additional starting and troubleshooting information.



IMPORTANT: READ THE OPERATOR'S MANUAL THOROUGHLY AND FOLLOW THE SAFE OPERATION PRACTICES WHILE OPERATING THE UNIT.

Lea la traducción en Español en el manual.